



[promultis]

videowall



Slim
Bezel



Control
Solutions



Design
Service

- Create a high impact video wall installation
- Thin almost invisible bezel
- Standard/High brightness, 1080p & 4K LED screens
- Latest infra red touch technology
- Projected capacitive touch technology
- Fully bespoke software solutions available
- Custom design & installation service

Promultis bespoke standard, multitouch and gesture, high brightness, slim bezel Video Walls offer the perfect display solution for large-scale viewing environments



Promultis can create bespoke multiuser collaborative content for the table

[click here](#) for website examples



[promultis] videowall

For more exciting multitouch products visit
www.promultis.info
or call +44 (0) 239 251 2794

Standard video walls

Promultis Video Walls are the perfect display solution for large-scale viewing environments.

Ultra-narrow bezel LCD flat panels are perfect for creating high-definition, near-seamless tiled display walls in any configuration.

Our professional and industrial-grade, high brightness screens offer up to 800nits for superior visual performance.

These large format displays are ideal for exhibitions, events, corporate boardrooms, receptions, shopping centres, museums and control rooms.



Digital Signage



Hotel Reception



Marketing Suite



Exhibition rentals



Multitouch video walls

Utilising the latest Infra Red touch technology, Promultis Multitouch Video Walls enables up to 32 touch points and allows multiple users to simultaneously interact with the video wall to achieve a fully collaborative environment.

Featuring a glass front to provide maximum ruggedness to a modular, near seamless touch surface that protects the LCD screens.

The touch screen is self-supported, not putting pressure on the LCD displays. This also enables ease of maintenance as the touch screen can be lifted away for easy monitor adjustment.

These large format displays are ideal for large collaborative environments.



Atrium



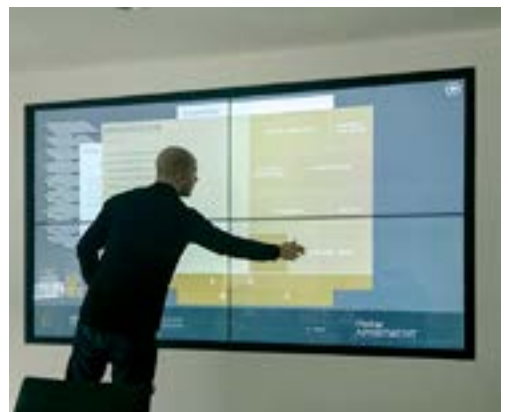
Corporate Event



Exhibition Stand



Reception Area



Conference Room

Projected Capacitive Multitouch video walls

Following extensive research & development, our hardware & software engineers were able to manufacture and install a world first! The first curved interactive video wall that utilises projected capacitive touch technology!

Consisting of industry standard, high brightness, high definition screens in a 9x1 configuration, this wall is a true sight to behold. The curved design results in a much more engaging experience for the user, making the content feel closer than ever before.



The solution is also capable of up to 360 touch inputs at any one time, so if required, 36 people could interact with the wall at the same time with both hands! The solution is driven by a Promultis built server using only the highest grade components and graphics cards, ensuring the wall runs smoothly for extended periods at all times.

We have the know how to make your content feel closer and more engaging when utilising a curved design, this is a true breakthrough in the world of interactive video walls and opens a new world of possibilities for our clients.



Gesture and motion-activated solutions

Promultis offers motion-activated and multitouch solutions that allow the user to interact with immersive, instructive and entertaining content.

Promultis video walls can react to a viewer's presence triggered by a camera or touch sensor and track their behaviour.

The software reacts to the viewer's position and movements through camera tracking and can update the content on the video wall through a range of effects including dissolves, swirls, reveals, tiles and rotating shapes.



Automated Audience Measurement

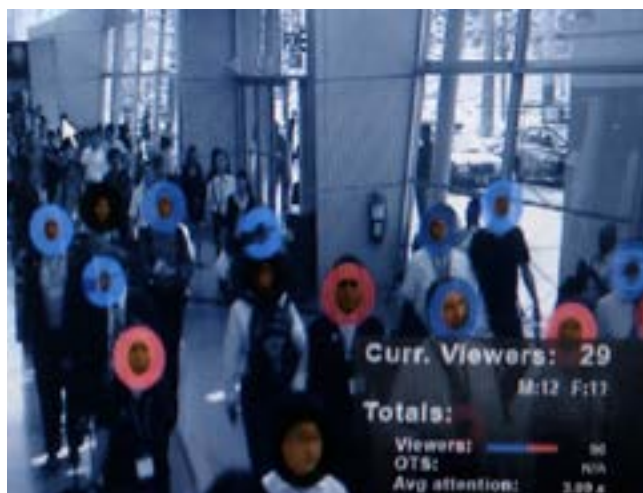


Photo Booth



This bespoke functionality allows photographs taken via the camera to be displayed on the video wall. The example generated a mosaic showing the images within a larger picture.

Face detection and analysis technology counts viewers, accurately measures their dwell and attention times, estimates their gender and age ranges.

This solution delivers the ability to automatically adapt content - in real-time - to the demographics of the audience. As well as statistics-based insight about users and their preferences based on onscreen selections.

Real-time collaboration solutions

Promultis Video Wall solutions include the ability to interact with screen content in real-time from other Promultis Touch Screen products or external devices such as tablets.

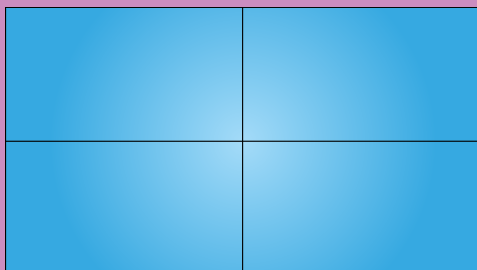
Promultis supply interactive interfaces for delivering accessible, fully-branded, media-rich presentations.



Screen configuration

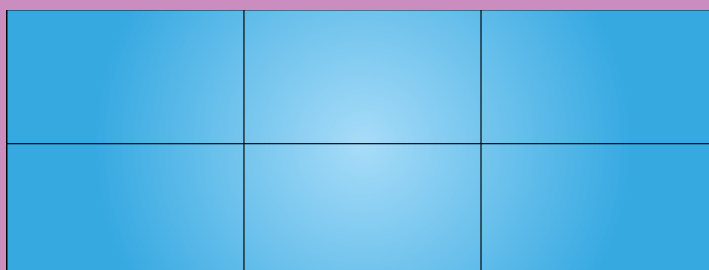
2x2 Video Wall

47" screens - 2090mm x 1180mm*
55" screens - 2431mm x 1372mm*



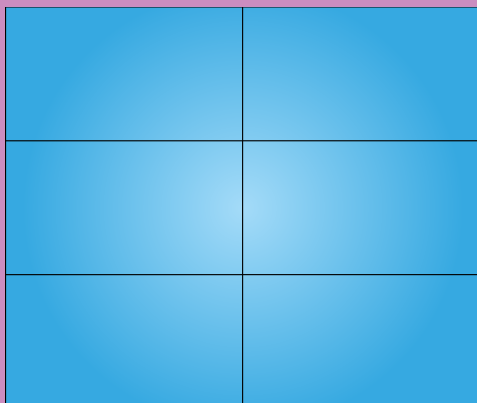
3x2 Video Wall

47" screens - 3135mm x 1180mm*
55" screens - 3646mm x 1372mm*



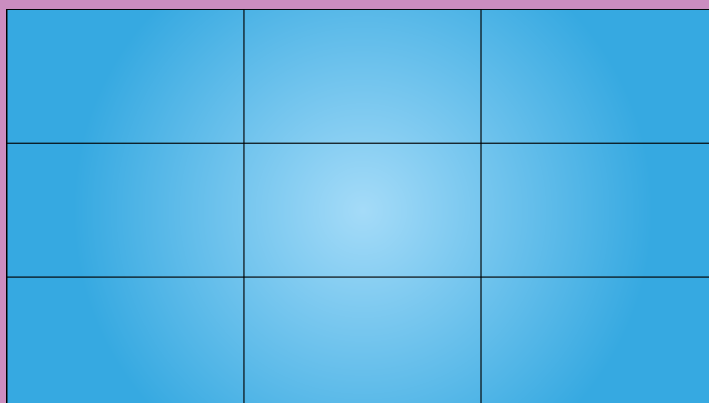
2x3 Video Wall

47" screens - 1180mm x 3135mm*
55" screens - 1372mm x 3646mm*

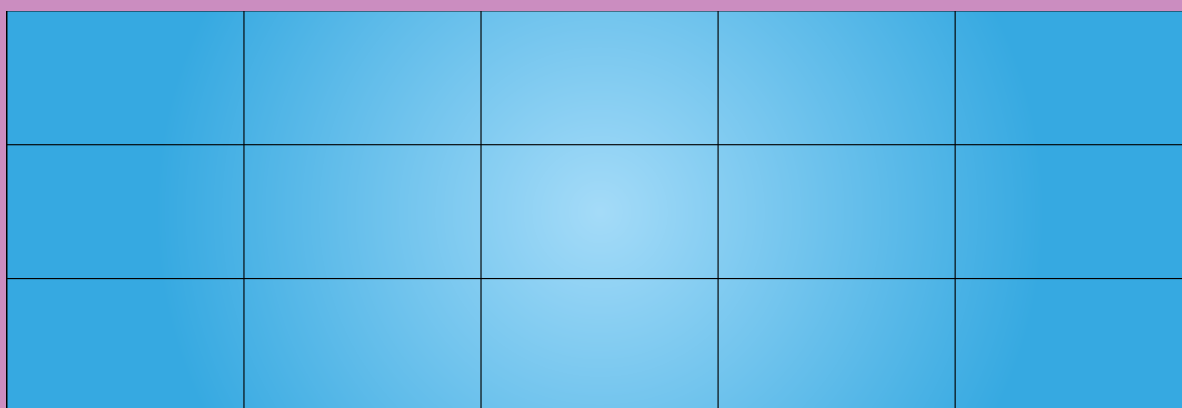


3x3 Video Wall

47" screens - 3135mm x 1770mm*
55" screens - 3646mm x 2058mm*



Unlimited size Video Wall



* Denotes the visible screen area and does not include the video wall structure



Custom Design and Installation Service

Our expert team have extensive experience of designing and installing video wall solutions and offer a complete range of services from design through to installation, and, when necessary, dismantling and collection.

Bracket and frame choice is determined by the environment in which the video wall is required including issues like accessibility being taken into account. Promultis professional frame solutions offer precision alignment and high end serviceability.



Fingal, Ireland



Leeds University



Olympic Park, London



GEMS Nations Academy, Dubia

Specification

INFRA RED TOUCH TECHNOLOGY

Touch Points	32
Touch sensitive to	Finger, Opaque object, Stylus
Sunlight Sensitivity	Can be used in direct sunlight
Interpolation	32,768x32,768
Response time	Repeated touch <6ms
Drift	None
Temperature	-20°C~60°C
Accuracy	±2mm
Interface	USB-2

PANEL SPECIFICATION

Relative Humidity	10%~90%RH
Supported OS	Windows, MAC, Linux, Android
Aspect Ratio	16:9
Max Resolution	1920 x 1080
Colour	8 bit, 16.7M
Brightness (nits)	500 cd/m ²
High Brightness (nits)	800 cd/m ²
Contrast	1400:1
Visual Angle (H/V)	178°
Response Time	<=6ms
Life (hrs)	>100,000 (hrs)

VIDEO WALL CONTROLLER (built-in each screen)

Model Number	US-P817W
DVI in	1
HDMI in	1
VGA in	1
Composite Video Input/(AV)	1(BNC)
Composite Video Output	1(BNC)
Control signal input and loop out	RS232(RJ45-8)
Split Screen	Support Picture in Picture(PIP/POP)

POWER

Power Supply	AC100V~240V
Maximum Power Consumption	250W
Standby Power Consumption	<=3W

TEMPERATURE

Working Temperature	0°C~50°C
Working Humidity	20%-80%

PACKING & WEIGHT

Packing size	1145mm x 280mm x 690mm
Weight	33KGS

SERVICE AND WARRANTY

3 year repair or replace warranty as standard
Extended warranties and SLA's available at an additional cost

55" Screen Specification

