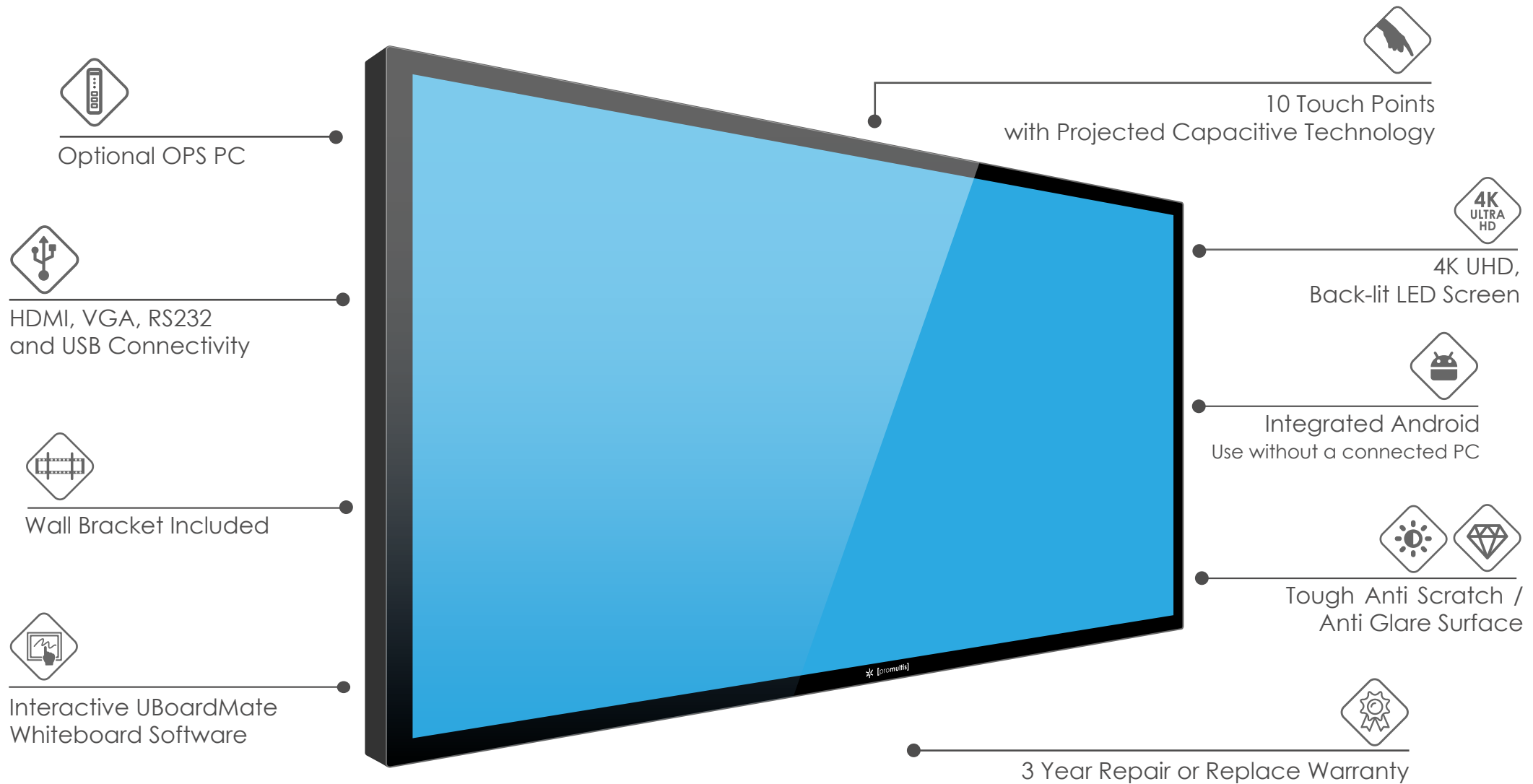




[promultis]

Firebolt Touch Screen

Offering Full UHD 4K, the picture quality is excellent and the touch response is superb. The screen is perfect for Business, Education and Commercial use.



PANEL	PM-65PC62 ES	PM-75PC62 ES	PM-86PC62 ES
Screen Size	65" (64.53")	75" (74.52")	86" (85.6")
Panel Technology	TFT LCD	TFT LCD	TFT LCD
Display Resolution	3840 x 2160	3840 x 2160	3840 x 2160
Brightness (Typical)	350 cd / ²	350 cd / ²	350 cd / ²
Contrast (Typical)	1200 : 1	1200 : 1	1200 : 1
Response Time (Grey To Grey)	9 ms	6 ms	8 ms
Frame Rate	60 Hz	60 Hz	60 Hz
Viewing Angle (H / V)	178° / 178°	178° / 178°	178° / 178°
Display Colors	1.07B (10-bit)	1.07B (10-bit)	1.07B (10-bit)
Backlight Type	Direct LED	Direct LED	Direct LED
Service Life	> 30,000 Hours	> 30,000 Hours	> 30,000 Hours
Installation	Landscape	Landscape	Landscape
Picture Mode	Dynamic / Standard / Soft / User / Game / Writing	Dynamic / Standard / Soft / User / Game / Writing	Dynamic / Standard / Soft / User / Game / Writing
TOUCH			
Detection Method	Projected Capacitive	Projected Capacitive	Projected Capacitive
Available Touch Point	10 Points (Support Up to 4 Active Pens)	10 Points (Support Up to 4 Active Pens)	10 Points (Support Up to 4 Active Pens)
Response Time (Typical)	<= 10 ms	<= 10 ms	<= 10 ms
Minimum Response Size	>= Φ 5 mm	>= Φ 5 mm	>= Φ 5 mm
Touch Resolution	16384 x 16384	16384 x 16384	16384 x 16384
Communication Interface	USB / UART	USB / UART	USB / UART
CONNECTIVITY			
HDMI Input(s)	4 (Side / HDMI 2.0 Compatible* / Type A)	4 (Side / HDMI 2.0 Compatible * / Type A)	4 (Side / HDMI 2.0 Compatible * / Type A)
HDMI Output(s)	1 (Optional/Side/HDMI 2.0 Compatible*/Type A)	1 (Optional/Side/HDMI 2.0 Compatible*/Type A)	1 (Optional/Side/HDMI 2.0 Compatible*/Type A)
VGA Input(s) (with Mini Jack Audio Input)	1 (Side / DE-15F)	1 (Side / DE-15F)	1 (Side / DE-15F)
DisplayPort Input(s)	1 (Side, DisplayPort 1.2 Compliant)	1 (Side, DisplayPort 1.2 Compliant)	1 (Side, DisplayPort 1.2 Compliant)
Digital Audio Output(s)	1 (Bottom / Optical)	1 (Bottom / Optical)	1 (Bottom / Optical)
Audio / Headphone Output(s)	1 (Bottom / Mini Jack)	1 (Bottom / Mini Jack)	1 (Bottom / Mini Jack)al)
USB 3.0 Port(s)	-	-	-
USB 2.0 Port(s)	5 (2 Side, 2 Front, 1 Top / Type-A)	5 (2 Side, 2 Front, 1 Top / Type-A)	5 (2 Side, 2 Front, 1 Top / Type-A)
RS-232C Port(s)	1 (Bottom / DE-9F)	1 (Bottom / DE-9F)	1 (Bottom / DE-9F)
LAN Port(s)	1 (Bottom / RJ45 for 10 / 100 Base-T)	1 (Bottom / RJ45 for 10 / 100 Base-T)	1 (Bottom / RJ45 for 10 / 100 Base-T)
Wi-Fi Module	IEEE 802.11 a/b/g/n/ac	IEEE 802.11 a/b/g/n/ac	IEEE 802.11 a/b/g/n/ac
Touch Output(s)	2 (2 Bottom / USB Type-B)	2 (2 Bottom / USB Type-B)	2 (2 Bottom / USB Type-B)
Bluetooth Version	4.1	4.1	4.1

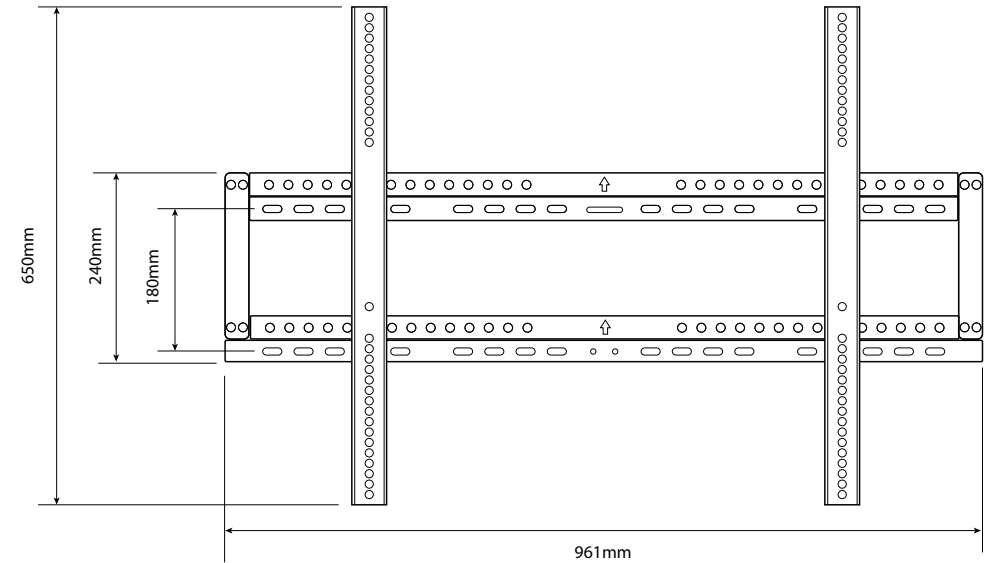
PANEL	PM-65PC62 ES	PM-75PC62 ES	PM-86PC62 ES
SOUND			
Audio Power Output (RMS)	15 W x 2 / 8 Ω + 15 W / 6 Ω	15 W x 2 / 8 Ω + 15 W / 6 Ω	15 W x 2 / 8 Ω + 15 W / 6 Ω
Subwoofer	YES	YES	YES
Speaker Position	Down Firing	Down Firing	Down Firing
Sound Mode	Standard / Music / Movie / Sports / User	Standard / Music / Movie / Sports / User	Standard / Music / Movie / Sports / User
SMART SYSTEM			
CPU	ARM Cortex A53 x 4	ARM Cortex A53 x 4	ARM Cortex A53 x 4
GPU	Mali-450 MP4	Mali-450 MP4	Mali-450 MP4
Operating System	Android 5.0.1	Android 5.0.1	Android 5.0.1
Memory	2 GB	2 GB	2 GB
On-board Storage	16 GB	16 GB	16 GB
OSD			
OSD Language Function	English	English	English
MECHANICAL			
Dimension of Product (W x H x D)	1526 x 902 x 95 mm	1747 x 1026 x 95 mm	1993 x 1165 x 95 mm
Dimension of Package Carton (W x H x D)	1665 x 1071 x 228 mm	1888 x 1190 x 228 mm	2128 x 1337 x 228 mm
VESA® Hole Pitch (W x H)	600 x 400 mm, M8 Screw	600 x 400 mm, M8 Screw	800 x 600 mm, M8 Screw
Front Glass	Tempered Glass (Anti-glare Type)	Tempered Glass (Anti-glare Type)	Tempered Glass (Anti-glare Type)
POWER			
Power Supply	AC 100-240 V 50 / 60 Hz	AC 100-240 V 50 / 60 Hz	AC 100-240 V 50 / 60 Hz
Power Consumption (in Operation)	170 W	290 W	370 W
Power Consumption (in Standby)	<= 0.5 W	<= 0.5 W	<= 0.5 W
ECO Sensor	YES	YES	YES
ENVIRONMENTAL			
Operation Temperature	0 - 40°	0 - 40°	0 - 40°
Storage Temperature	-20 - 60°	-20 - 60°	-20 - 60°
Operation Humidity	20 - 80 %RH (No Condensation)	20 - 80 %RH (No Condensation)	20 - 80 %RH (No Condensation)
Storage Humidity	10 - 90 %RH	10 - 90 %RH	10 - 90 %RH
SUPPLIED ACCESSORIES			
	AC Power Cable / Operating Instructions / Quick Start Guide / Writing Pen / Remote Control / VGA Cable / USB Cable / HDMI Cable / Guarantee Card		

* up to 3840 × 2160 @ 60 Hz

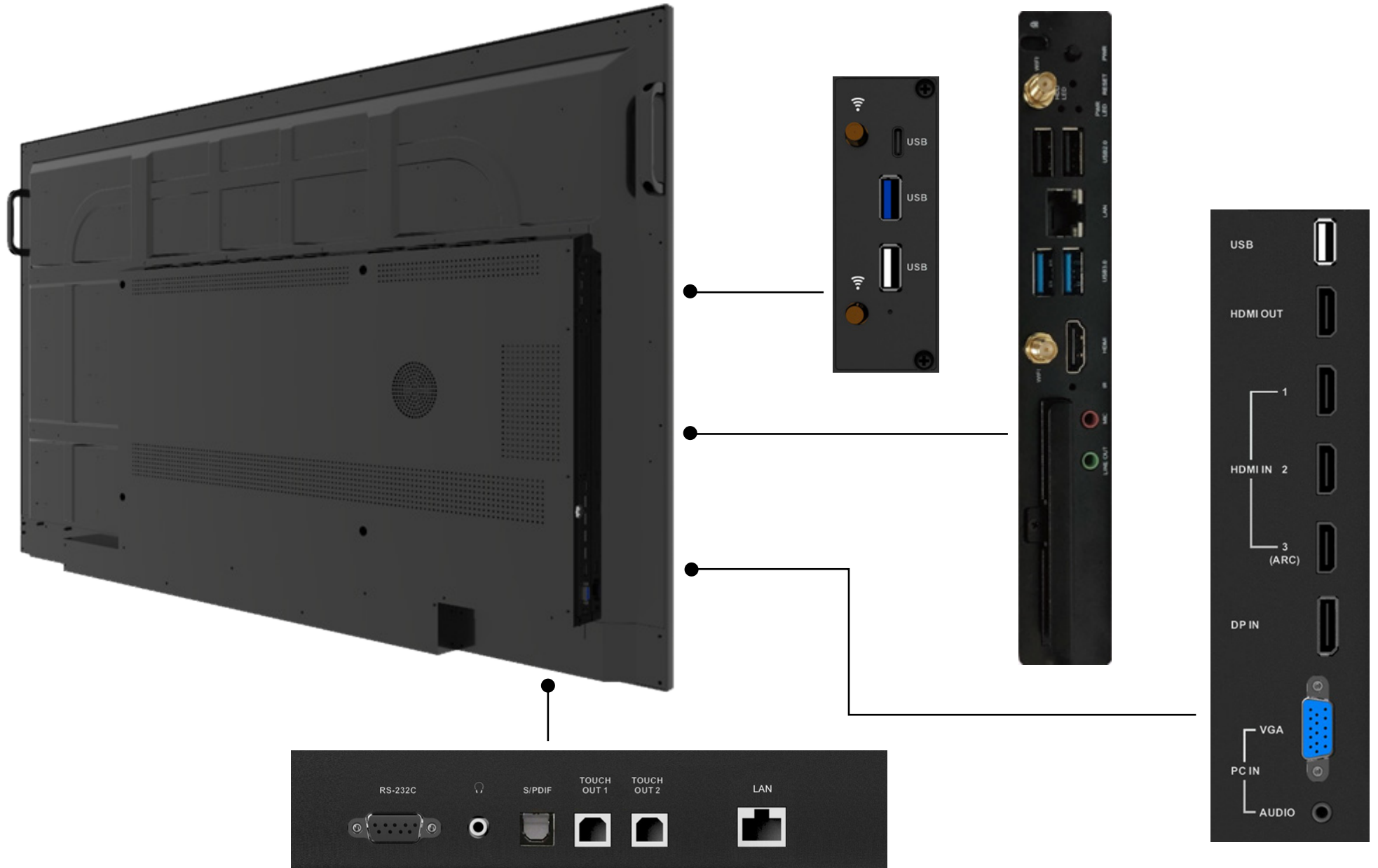
Andriod OS	
System Version	Android 5.01
CPU	ARM Cortex A53 1.5G
GPU	Mali450x4
RAM	2GB

PC Module (Optional)	
Operating OS	Windows 10 / DOS
CPU	6th / 7th Generation Intel® Core™ Mobile Processor
Chipset	Integrated
Graphics	Integrated
Memory	4 GB up to 16 GB Dual Channel, DDR4L 2 x SO-DIMM
Storage	2.5" 500 GB up to 2 TB SATA Hard Drive 128 GB up to 256 GB M2.2242 SSD (Optional)
Wireless Data Network	802.11 a/b/g/n/ac, Bluetooth V4.0
LAN	10/100/1000 Mbps
Audio	High Definition 5.1 Channel Audio
I/O Ports	2 x USB 3.0 Type-A 2 x USB 2.0 Type-A 1 x HDMI (up to 4K @ 30 Hz) 1 x RJ45 LAN 2 x Audio Jack(s) (Line out / Mic in)
OPS Interface	HDMI (up to 4K @ 60 Hz)
Dimension	180 mm (L) x 119 mm (W) x 30 mm (H)
Weight	0.9 kg

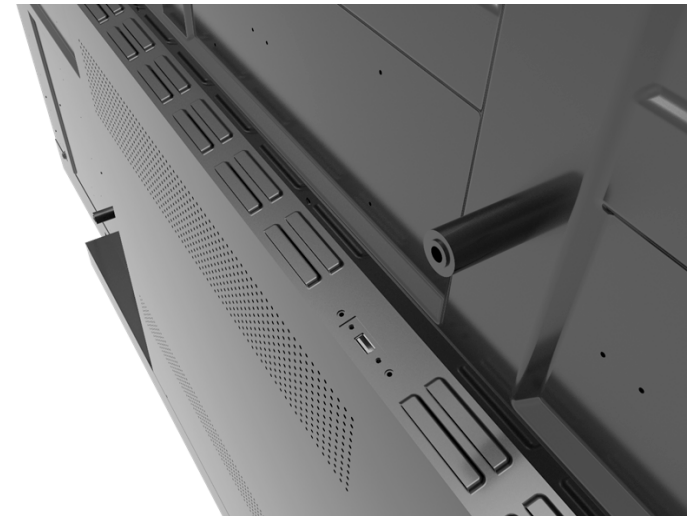
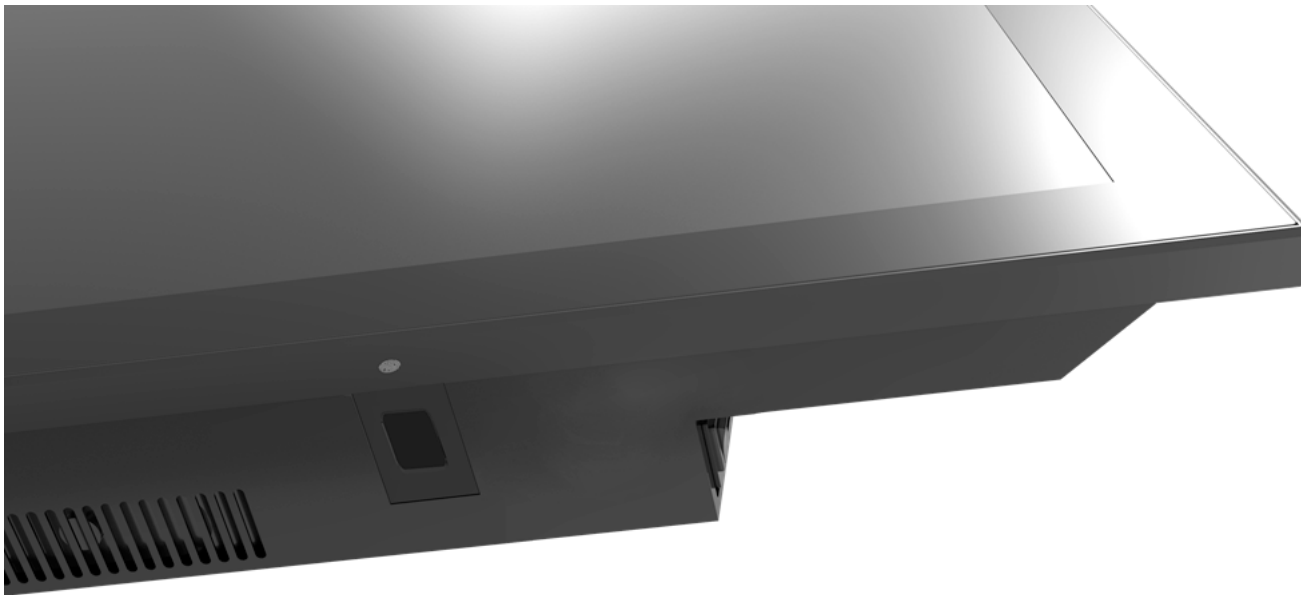
Supplied Mounting Bracket			
Width	Height	Depth	Weight
960 mm	240 mm	29.4 mm	8kg



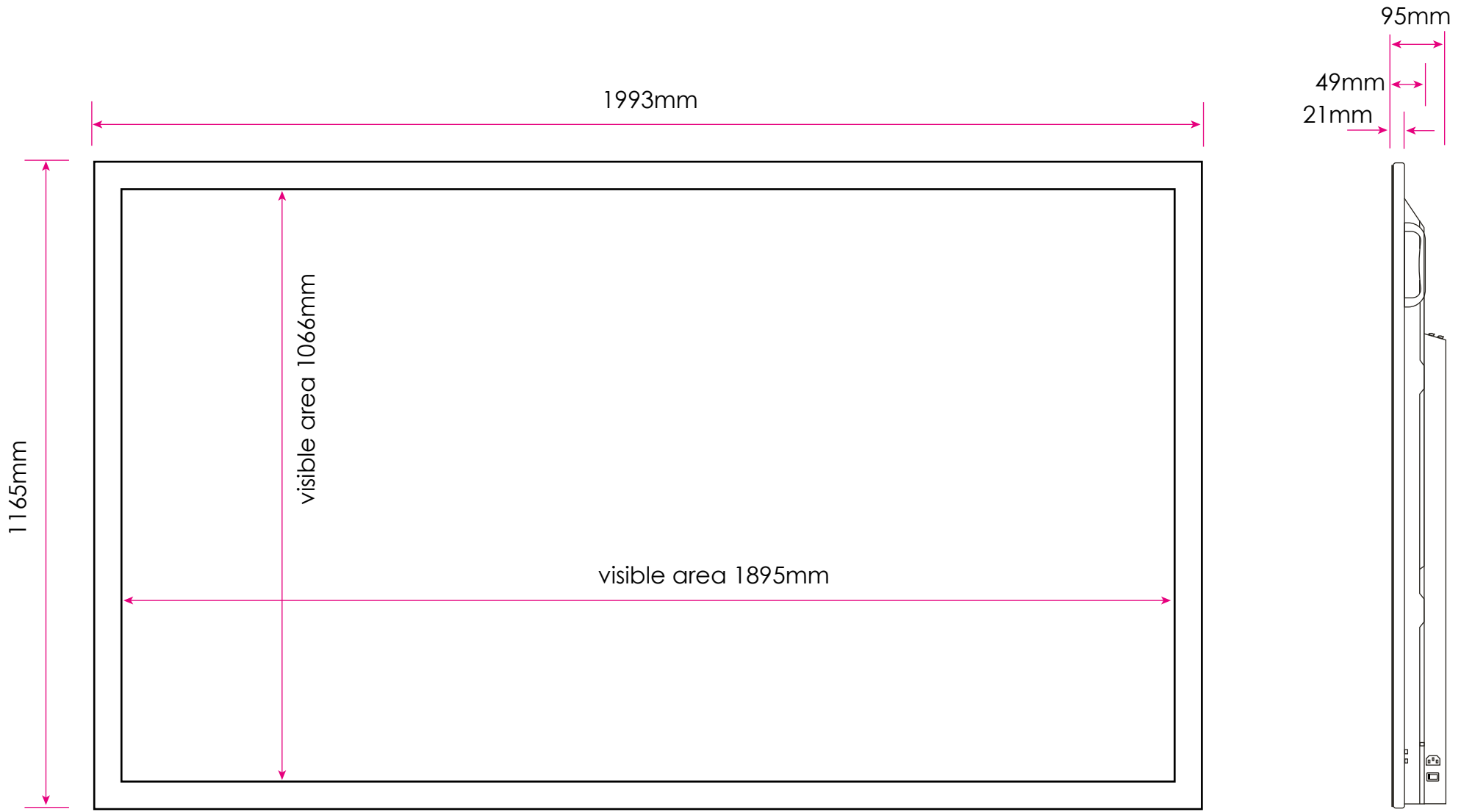
Connectivity



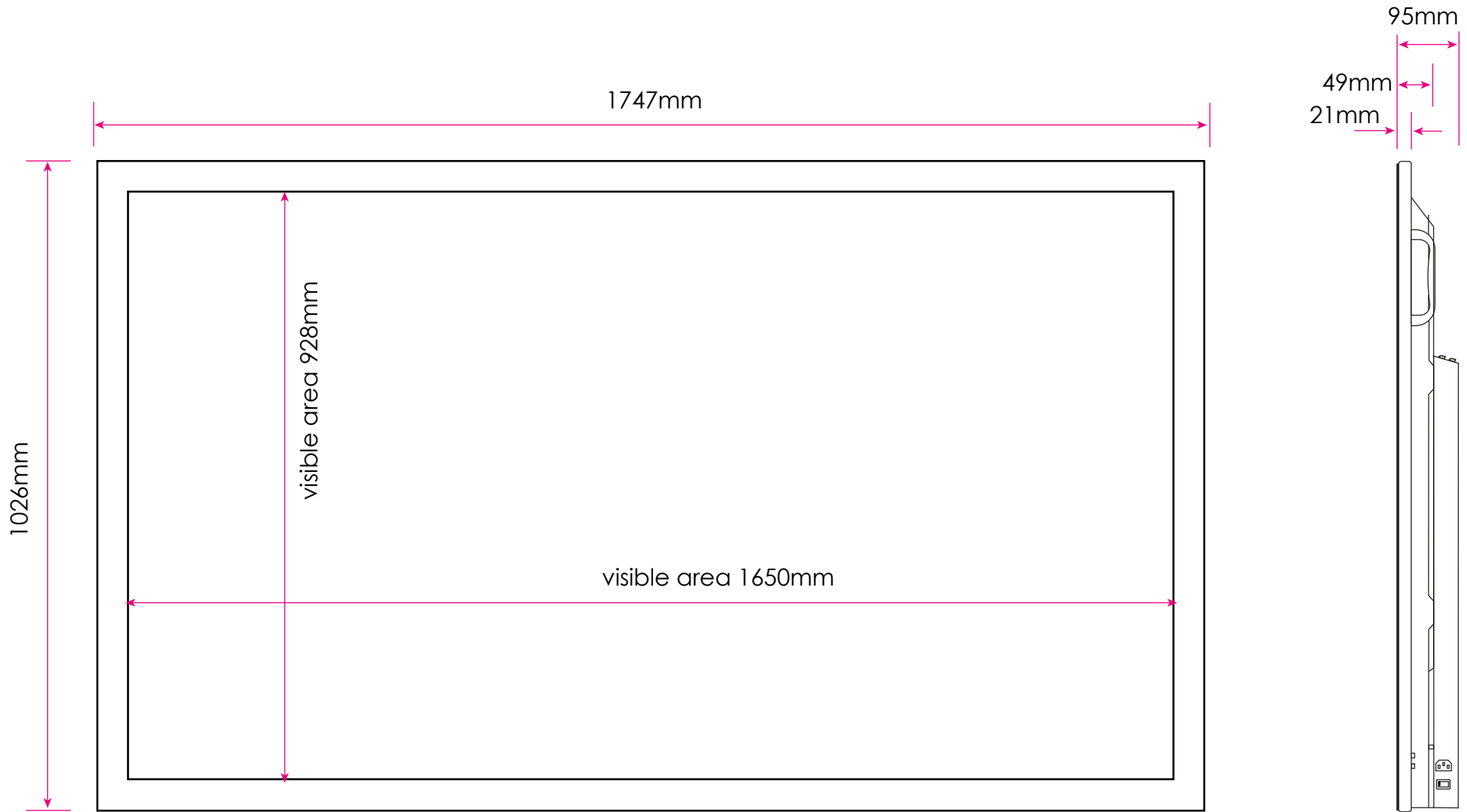
Connectivity



86" Firebolt Touch Screen Dimensions



75" Firebolt Touch Screen Dimensions



65" Firebolt Touch Screen Dimensions

