



[promultis]

unotable



USER'S MANUAL

CAUTION

- Changes or modifications not expressly approved by the party responsible for compliance could void the user's authority to operate the equipment.
- This User's Manual includes detailed usage instructions for your product.
- Please read this manual thoroughly.
- Figures and illustrations in this User Manual are provided for reference only and may differ from actual equipment appearance. Equipment design and specifications may be changed without notice.
- Due to the processes required for manufacturing a large format Projected Capacitive product Promultis will only accept warranty requests for units that have a blemish, mark or smear on the touch skin that is 5% or larger than the total interactive area.

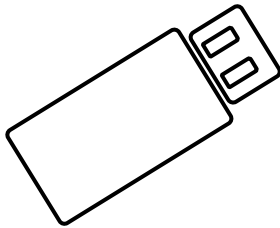


[promultis]
MULTITOUCH SOLUTIONS

For more exciting multitouch products visit
www.promultis.info
or call +44 (0) 239 251 2794

Getting started

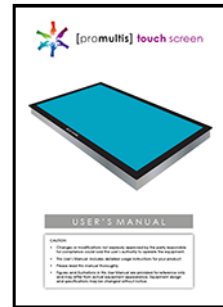
The following items are included in your product box.



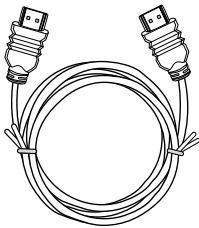
USB Memory Stick with
Promultis User Manual pdf
Warranty Card



Remote Control



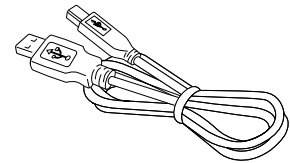
Promultis Manual



HDMI Cable



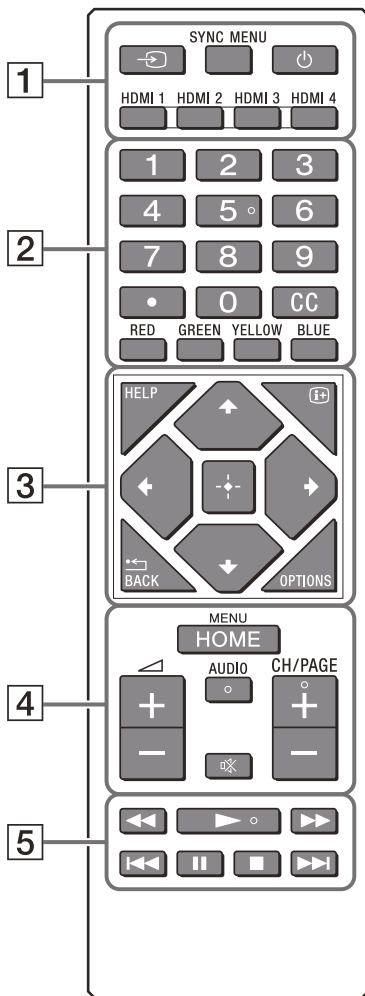
AC Power Supply




USB Cable

Controller

1. Check the plug is switched on at the wall socket.
2. When the power is turned on the screen should power up.
3. After a few seconds, if the screen is still blank, take the TV remote control, point towards the bottom right corner of the screen and press the power button.



- 1**  **(Input select)**
Display and select the input source.
Press repeatedly to switch the input source.

SYNC MENU

Display the BRAVIA Sync Menu.

(Monitor standby)

Turn on or turn off the Monitor (standby mode).

HDMI 1/2/3/4

Switch to the HDMI input.

- 2** **Number buttons**



Use with the 0-9 buttons to select digital channels.

CC

Turn subtitles on or off (when the feature is available).

Colour buttons

Execute corresponding function at that time.

- 3** **HELP**

Display the Help menu. Help Guide can be accessed from here.

(Screen display)

Switch to show/hide the information of the input source, clock, etc.

/BACK

Return to the previous screen.

OPTIONS

Displays a list of functions that can be used at that time.

(Navigation D-Pad)

On screen menu navigation and selection.

- 4** **HOME**

Display the Monitor Home Menu.

+/- (Volume)

Adjust the volume.

AUDIO

Change the language for the programme currently being viewed.

(Muting)

Mute the sound. Press again to restore the sound.

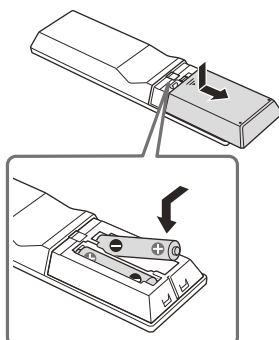
CH/PAGE +/-

Press to change a channel or a page.

- 5** 

Operate media contents on the Monitor and connected BRAVIA Sync-compatible device.

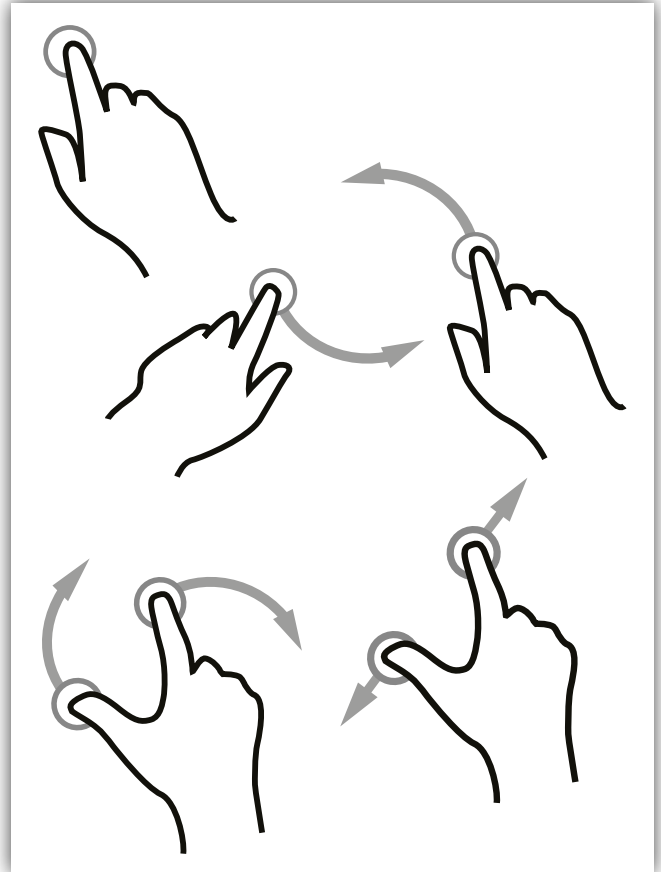
Slide and open the lid of the battery compartment, then insert two R03 (size AAA) batteries.



Operation Guidance

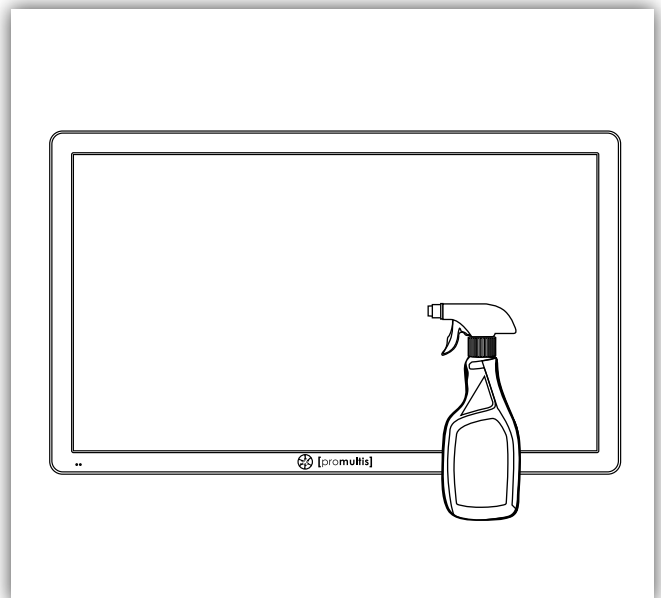
When using the screen the gesture functions are similar to using your touch screen phone or tablet but on a much larger scale.

What has to be born in mind when using a large scale interactive touch screen is how the technology works.



Screen Cleaning

Over time and use the screen will become tarnished with finger prints; to clean a mist spray class cleaner / degreaser should be used when the screen is at a 45 degree angle. Should any liquid be dropped on the screen when it is in the horizontal position this should be mopped up with a liquid absorbent cloth prior to cleaning.



Displax Set-up for touch screen

Configuration wizard for touch skin

The Configuration Wizard is a tool that will assist you setting the Gain, Threshold, Shield and Calibration for the video wall touch skins.

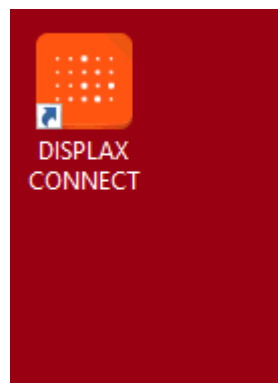
The configuration of these settings is required to have touch recognition.

The 'Configuration Wizard' was developed to analyze and to configure the Touch Sensor and the Touch Controller parameters. It helps you to achieve a configuration based on objective data and not on subjective user input. It can always be reviewed by the user.

This process follows the following six steps:

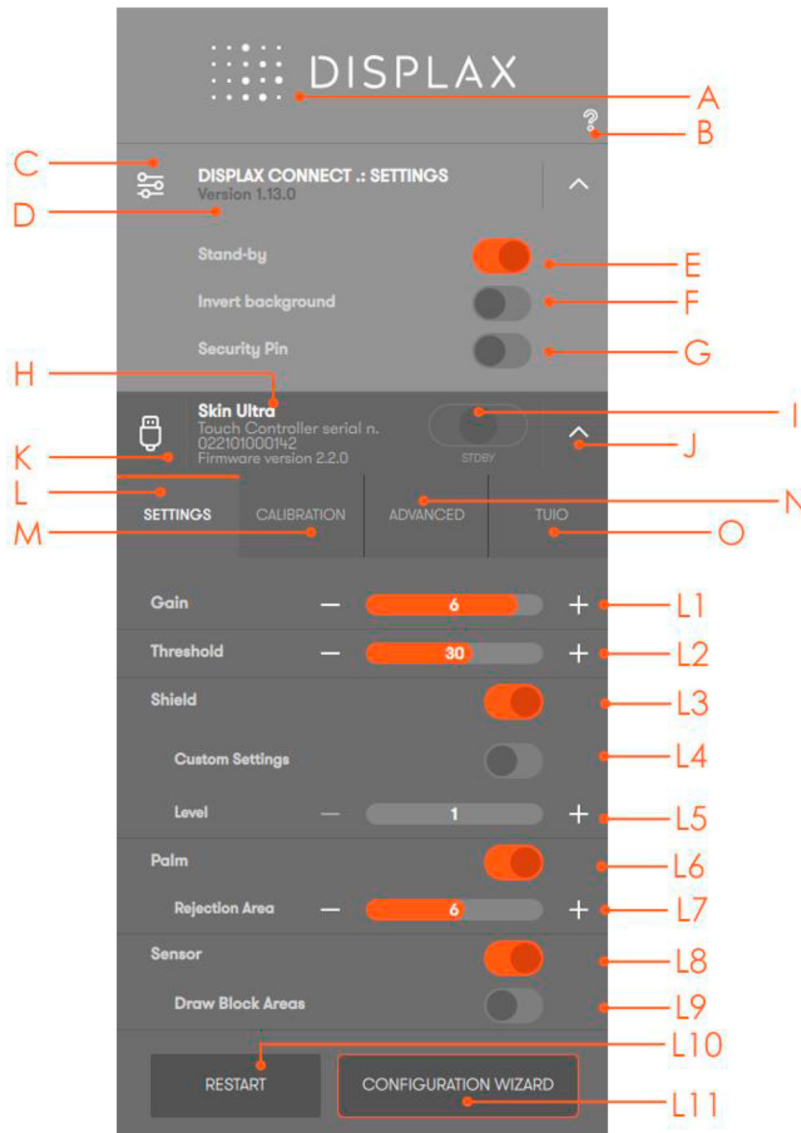
- Touch Controller: verifies sensor signal, sensor matrix and identifies the Displax product;
- Sensor Scan: verifies the sensor integrity and checks if the FFCs are properly connected;
- EMI (ElectroMagnetic Interference): checks the electromagnetic interference level that may exist between the LCD and the sensor active area;
- Display: variations in the intensity of light are displayed to analyze the electromagnetic interferences and find an appropriate shielding level;
- Touch Sensor: establishes a relation between the analyzed data and the touch contact, in order to select the best Gain, Threshold and Shielding level;
- Calibration: calibration process to match the physical touch with the Operating System digital coordinates.

The configuration tool can be opened via the Displax Connect icon on the desktop.



HOW TO USE 'DISPLAX CONNECT'

The features A to F provide information relative to 'DISPLAX Connect' Control Panel. The remaining letters from G on provide information relative to settings or information stored in the Touch Controller.



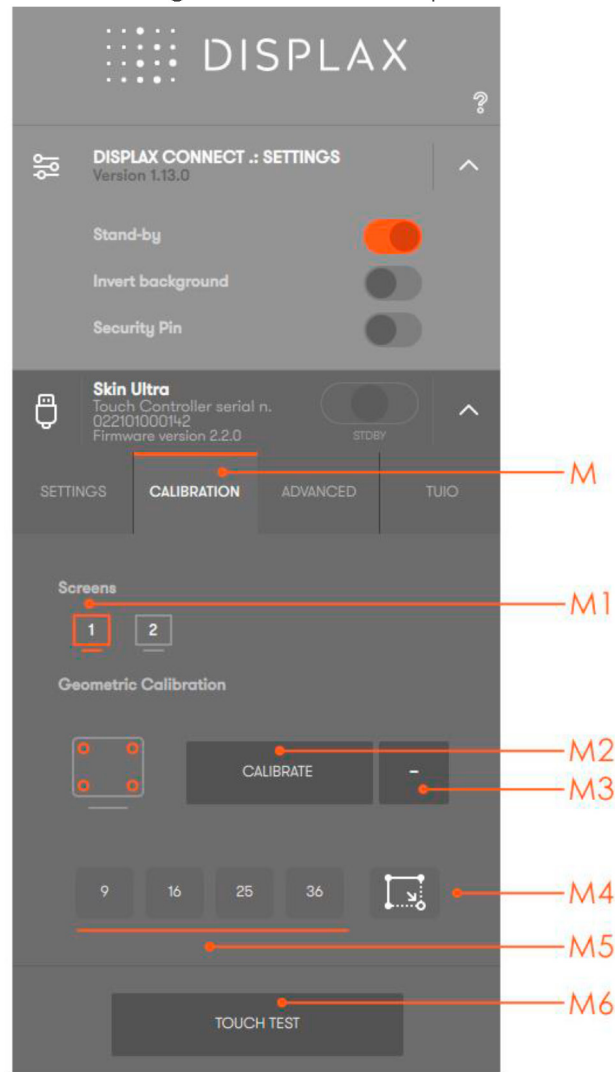
- A. Displax Connect: drag floating menu.
- B. Help menu: shortcut keys and help per feature.
- C. Hide and show 'DISPLAX Connect' settings.
- D. DISPLAX Connect version.
- E. Stand by: the touch is temporally disable when opening the control panel. This way, if you want to adjust some setting you will be able to do it. When you close 'DISPLAX Connect' the touch injection will be automatically re-enabled and the STAND-BY status will change to ON. This stand-by status is only active when 'DISPLAX Connect' is open.
- F. Invert background: alternate between a white and a black background

- G. Security Pin: a security pin to protect the configured settings.
- H. Skin Ultra serial number.
- I. Touch Injection Status: touch injection to the Operating System. This has 3 modes:
ON: Operating system will receive touch events from Skin Ultra. OFF: Operating system will not receive touch events from Skin Ultra.

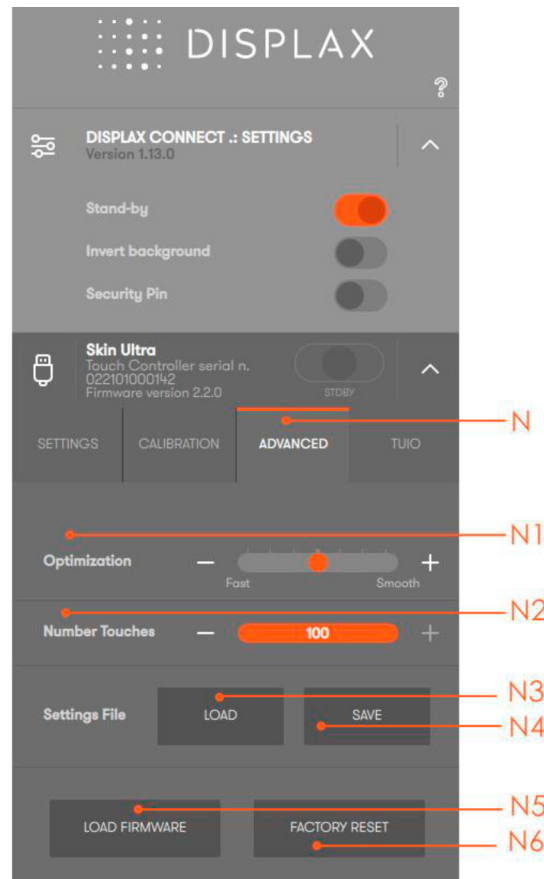
STAND-BY: Operating system will temporarily not receive touch events from Skin Ultra. This way, if you want to adjust some setting you will be able to do it. When you close 'DISPLAX Connect' the touch injection will be automatically re-enabled and the STAND-BY status will change to ON. This stand-by status is only active when 'DISPLAX Connect' is open.

- J. Hide/show Touch Controller settings.
- K. Touch Controller firmware version.
- L. Settings tab: 'DISPLAX Connect' configuration settings.
- L1. Gain: adjusts the signal strength injected by the Touch Controller on the Touch Sensor - thicker glasses and bigger Touch Sensors will require a strong signal (higher GAIN values). Gain values range between 0 and 7.
- L2. Threshold: adjusts the threshold level of what is considered a touch. Values vary between 0 and 50 starting on firmware version 1.5.0. (0 to 15 on firmware version equal or previous to 1.4.0).
- L3. Shield: electromagnetic shielding reduces noises that may exist between the Skin Ultra and the LCD.
- L4. Shielding level: adjusts the level of shielding. Ranges between 1 and 6, with 6 being the strongest shielding level. The shielding level should be maintained as low as possible.
- L5. Palm: allows the rejection of areas with dimensions larger than a finger, such as a hand or an arm.
- L6. Rejection area: allows the rejection of touches from a hand, arm or other object placed over the touch sensor.
- L7. Sensor: checks the Touch Sensor electrical conditions on rows and on columns to visualize electromagnetic interferences and permits to enable and disable rows and columns, and to draw block areas.
- L8. Draw block areas: allows disabling the touch on specific Touch Sensor active areas, where you do not want touch being processed.

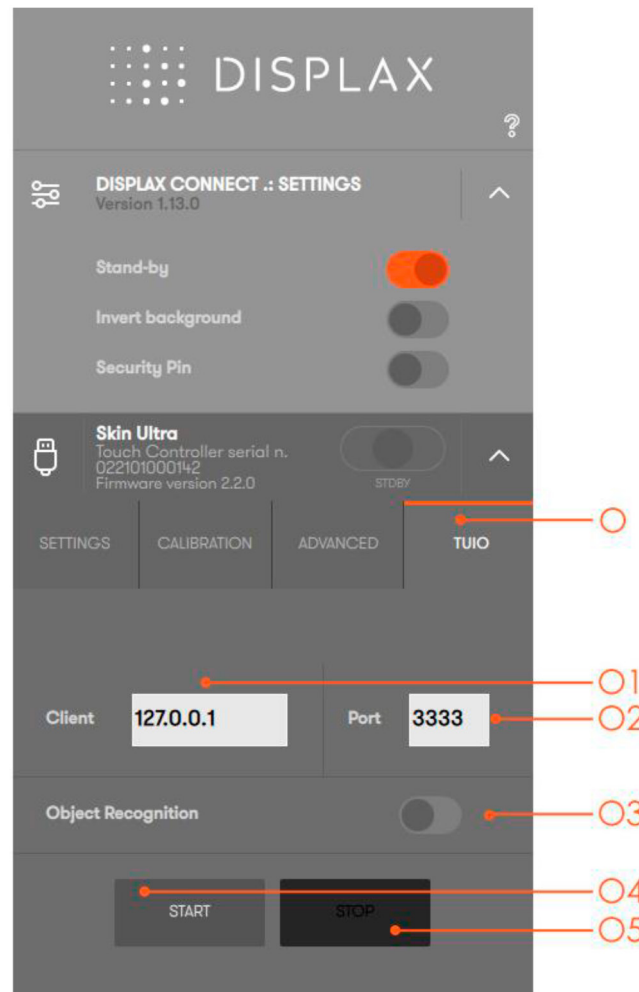
L10. Configuration wizard: this is an assisted process to configure the current setup. This feature is available depending on the version of the Touch Controller and firmware you are using. This feature is explained with more detail in the Configuration Wizard chapter.



- M. Calibration tab: calibration process to match the physical touch with the Operating System digital coordinates.
- M1. Screens: select the display where you want to perform the geometric calibration.
- M2. Calibrate: Click the button to start the geometric calibration. M3. + Advanced geometric calibration
- M4. Calibration points: Number of points used to perform the geometric calibration. Please refer to the advanced calibration chapter.
- M5. Drag mode: Calibration of Touch sensor smaller than the LCD. Please refer to the advanced calibration chapter.
- M6. Touch Test: Touch Test app.



- N. Advanced tab: advanced configuration tools.
- N1. Optimization: establishes a reason between Touch speed and Touch precision.
- N2. Number of touches: limits the number of touches reported by the Touch Controller (always between 1 to 100 touches). This feature is available depending on the version of the Touch Controller and firmware you are using.
- N3. Load settings file: allows loading previously saved configuration files. The user has to wait 10 seconds after changing settings, before changing to other settings, in order to correctly save them into the controller.
- N4. Save current settings to file: Allows saving the current settings to be used in other configurations. This feature should be used with equivalent setups, i.e. same LCD, glass thickness and size, sensor size and air gap.
- N5. Load firmware: allows to load a firmware file to the Touch Controller. N6. Factory reset: sets the Touch Controller to its default settings.



O. TUIO tab: touches transmission protocol. O1. Client: introduce the client IP.

O2. Port: introduce the client port number.

O3. Object recognition: activate or deactivate the object recognition feature.

O4. Start: starts sending TUIO events from the chosen device to the defined client.

O5. Stop: stops sending TUIO events from the chosen device to the defined client.



P



Q



R

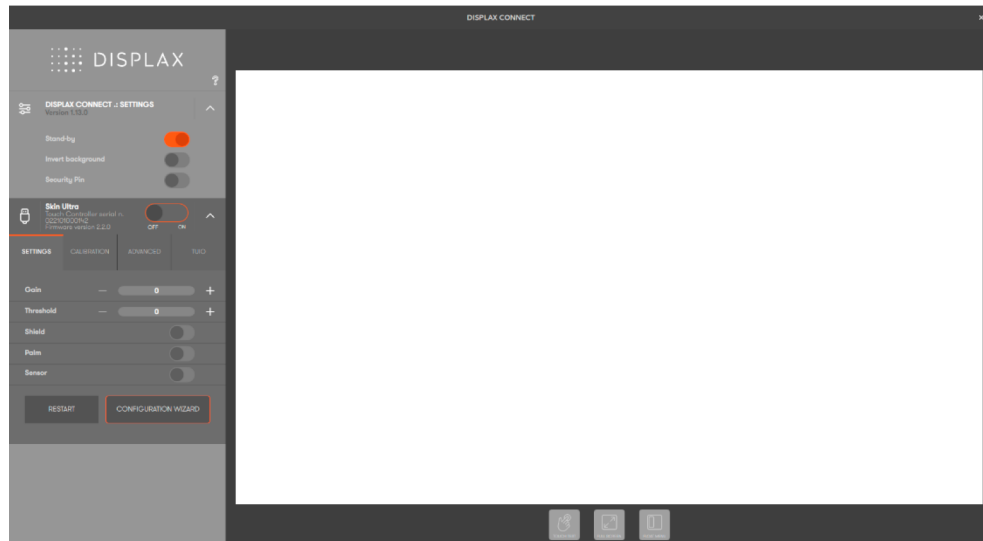


S

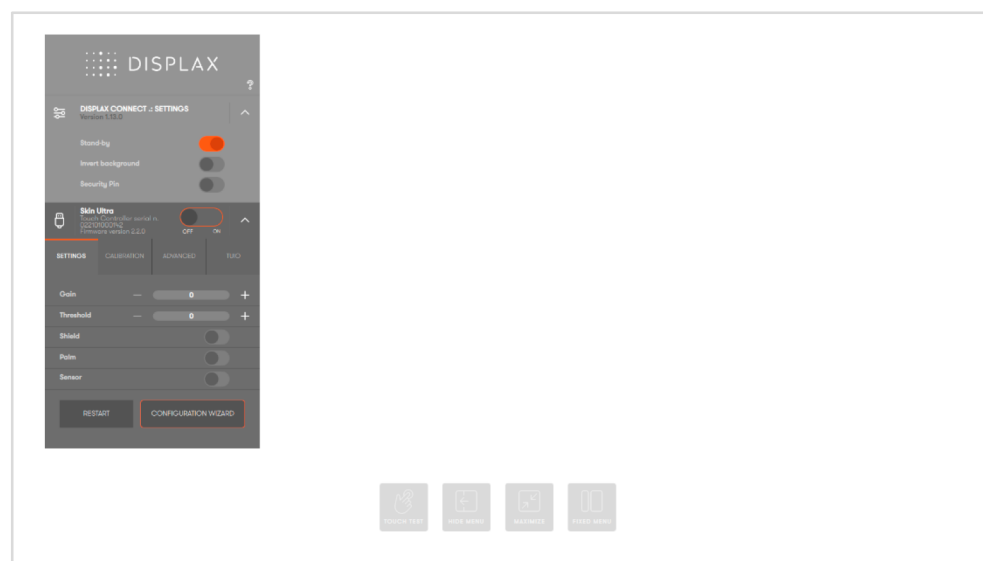
P. Touch Test: Touch Test app.

Q. Hide Menu: Hides 'DISPLAX Connect'.

- S. Fixed and Float menu: Transition between the fixed and the floating 'DISPLAX Connect' view.



Fixed view



Float view